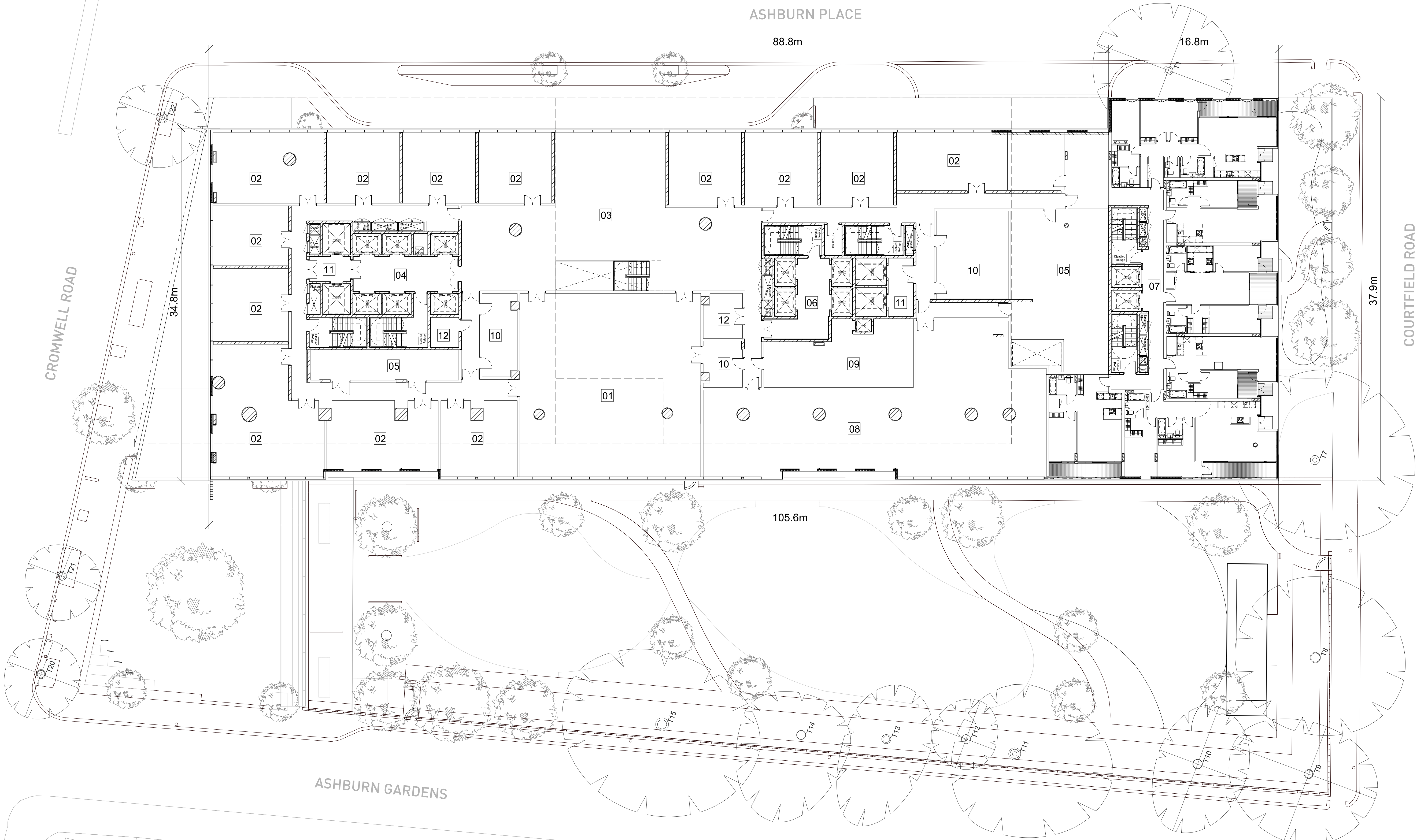


KEY

- 01 HOTEL CONFERENCE ROOM
- 02 HOTEL SYNDICATE ROOM
- 03 SYNDICATE BREAK-OUT SPACE
- 04 HOTEL LIFT LOBBY
- 05 HOTEL BOH/OFFICE
- 06 SERVICED APARTMENT LIFT LOBBY
- 07 RESIDENTIAL LIFT LOBBY
- 08 RESTURANT/BAR
- 09 KITCHEN
- 10 WC
- 11 SERVICE LIFT LOBBY
- 12 STORAGE

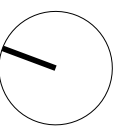


This drawing is copyright.  
Do not scale off dimensions.  
All dimensions to be checked on site by contractor.  
Contractor to report any dimensional discrepancies,  
errors or omissions prior to commencing on site.



NOTE:

NORTH



Rev	Date	Description	Rev	Date	Description
-	15/06/2019	Full Planning Application			
A	11/01/2019	GLA Cakhi Amendments			

Project Title  
Kensington Forum Hotel  
Kensington, London

Status  
PLANNING

Drawing Title  
Level 01 Floor Plan

Job No	Scale	Date
10106	1:200(A0) NTS(A3)	JAN 2019
Drawing No	Revision	
10106-A-DRG-ZZ-G200-2001-PL	A	

**simpsonhaugh**  
MANCHESTER  
Riverside, 4 Commercial St  
MANCHESTER M2 1BD  
Tel: 0161 835 2345  
www.simpsonhaugh.com  
LONDON  
2nd Roberts Place  
LONDON EC3R 7BQ  
Tel: 020 7586 9800  
mail@simpsonhaugh.com